



Reading and Language Journeys

In Journeys Common Core, students learn about words through instruction in vocabulary, spelling, language, and phonics. Students read widely and respond in writing and discussion to the texts they read. They build deepening knowledge within domain areas. This deep knowledge and focus on comprehension and analysis aligns with the Common Core focus on students reading and producing increasingly complex literary and informational texts.



Science and Social Studies

The Science and Social Studies curriculum is integrated into our language and math programs. We also integrate Scholastic Weekly Readers.



Go Math

This math program is a systematic step-by-step approach to developing mathematic concepts and skills. The focus on problem solving and reasoning provides opportunities for students to demonstrate and apply their understanding. Children are given a cumulative review and chapter test for each chapter and also a comprehensive test three times a year to determine how they are progressing.

Mathematics Standards:

Numbers, Number Systems and Relationships

- Applies one-to one correspondence
- Counts by 10's to 100
- Identifies numerals to 30
- Writes numbers

Computation and Estimation

- Demonstrates concepts of addition and subtraction

Measurement and Estimation

- Sorting & classifying
- Measures with nonstandard units

Mathematical Reasoning and Connections

- Uses math language appropriately

Mathematical Problem Solving and Communication

- Demonstrates problem solving strategies

Statistics and Data Analysis

- Organizes and displays data using graphs

Algebra and functions

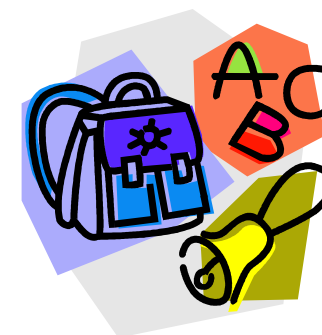
- Creates and replicates simple patterns

Algebra and Functions

- Recognizes and names two dimensional geometric shapes

Handwriting

Handwriting Without Tears is a developmentally based curriculum, for writing readiness. The multisensory lessons teach to all learning styles - visual, auditory, tactile and kinesthetic. Children use wooden sticks to make letters, form letters on individual chalkboards and finally print the letters in a handwriting book.

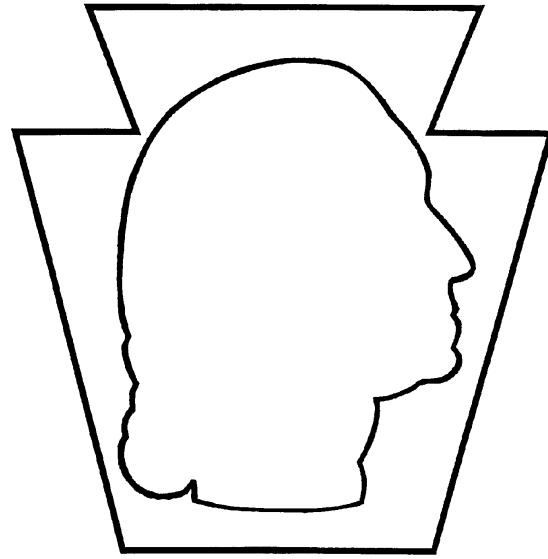


Journals

Children use journals beginning in September by copying one word and drawing a picture to match. As the year progresses, sentences are introduced and by the end of the year, children write two to three sentences on their own.

50 Ways To Praise A Child

Well Done * Way To Go * Great Job
Beautiful Work * Looking Good * Hurrah
For You * Great Discovery * Super Work *
Fantastic Job * Exceptional Performance *
You Are Responsible * You Made The
Right Choice * What A Good Listener *
You Tried Hard * You Care * You're A
Good Friend * You're Important To Me * I
Trust You * I Respect You * That's Correct
* That's Well Done * I Knew You Could
Do It * You Did It Right * Good For You *
You're Special To Me * Beautiful Sharing *
You Figured It Out * Outstanding Work * I
Like You * You Did A Good Thing * You
Are Fun To Be With * You Mean A Lot To
Me * I Am Your Friend * You're
Wonderful * A+ Job * You're A Special
Person * Nothing Can Stop You Now *
Dynamite Work * You Tried Hard *
Terrific Work * Beautifully Done * You're
Unique * I'm Proud Of You * Remarkable
Work * You Have A Marvelous
Imagination * You Have A Terrific Sense
Of Humor * You Make Me Laugh * You're
My Good Friend * I Love You *



Washington School District
Washington Park Elementary School
www.washington.k12.pa.us

*"Together... We Make A
Difference."*

Curriculum and Assessments
For
Kindergarten



The kindergarten program in the Washington School District is a full day program that is both academically and developmentally structured to ensure that all children's needs are met. Our day consists of reading, math, language and writing as well as centers, story and rest time activities. We have music, art, computer and gym classes weekly, as well as reading and science enrichment classes.

Each day children learn to work and play together as well as share responsibilities. By classroom interaction and activities, students learn character traits such as responsibility, self-discipline, using good judgment and getting along with others.

MAP Assessment

MAP® (Measures of Academic Progress®)

MAP assessments are computer adaptive achievement tests in Mathematics and Reading. MAP is a norm-referenced measure of student growth over time. MAP assessments, joined with other data points, provide detailed, actionable data about where each child is on his or her unique learning path. MAP assessments help teachers identify the instructional level of the student and also provide context for determining where each student is performing in relation to local or state standards and national norms. MAP reports allow teachers to better target instruction based on students' strengths and needs.